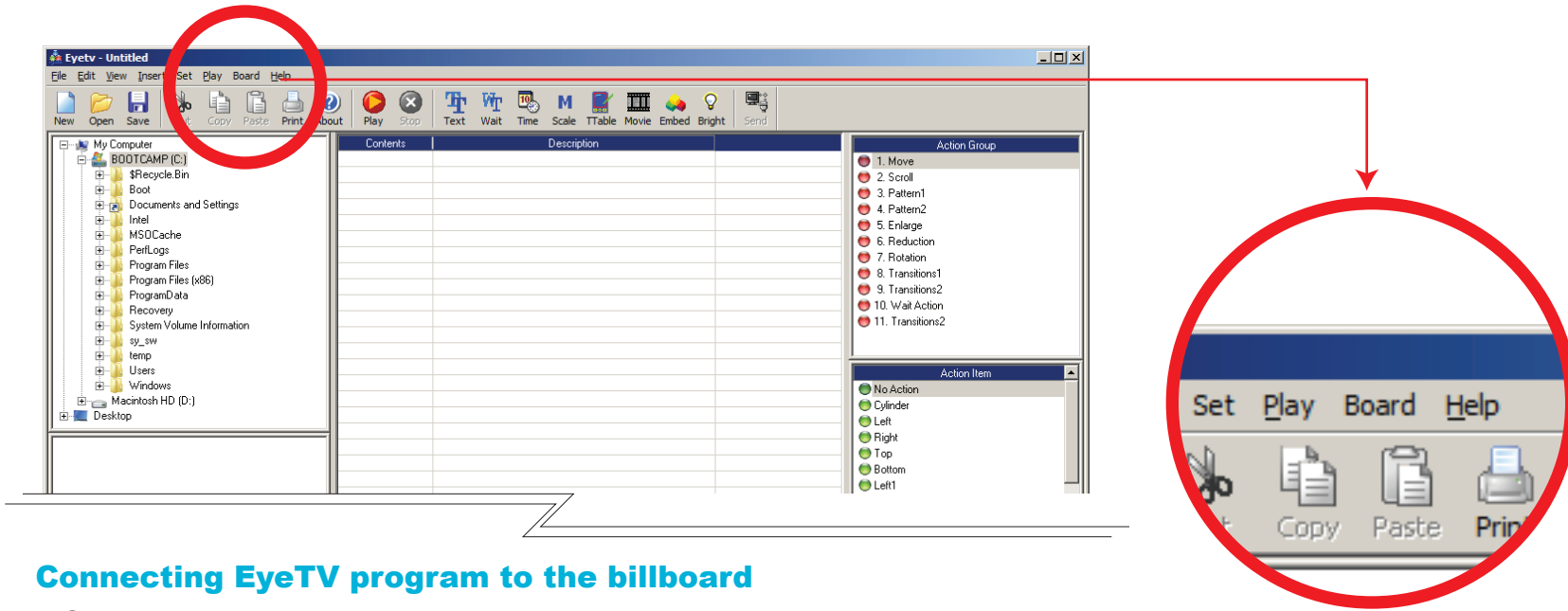


Connecting EyeTV program to the billboard



Connecting EyeTV program to the billboard

1. Click Board in the task bar
2. Click Connect in the options
3. Then Comm info box will appear
 - a. In the box the BaudRate should be at 115200
 - b. The Com Port should be the one designated from the beginning of the instruction
 - i. If you have forgotten the com port number Click on the down arrow on the comport box and there will be 2 or 1 com link number choose either one of the number
 - c. Click Ok
4. Then the connection will go through if there is a lag on the connection start back from the beginning and in the (i) option choose the other comm port number.

Sending the files to the billboard

1. After finishing all the information on the program Click Send
2. Then a box will appear with information about the program that you are going to send out
3. Click OK then wait until the Box with the information disappears
4. The Box will disappear and another box will come up as transfer complete

